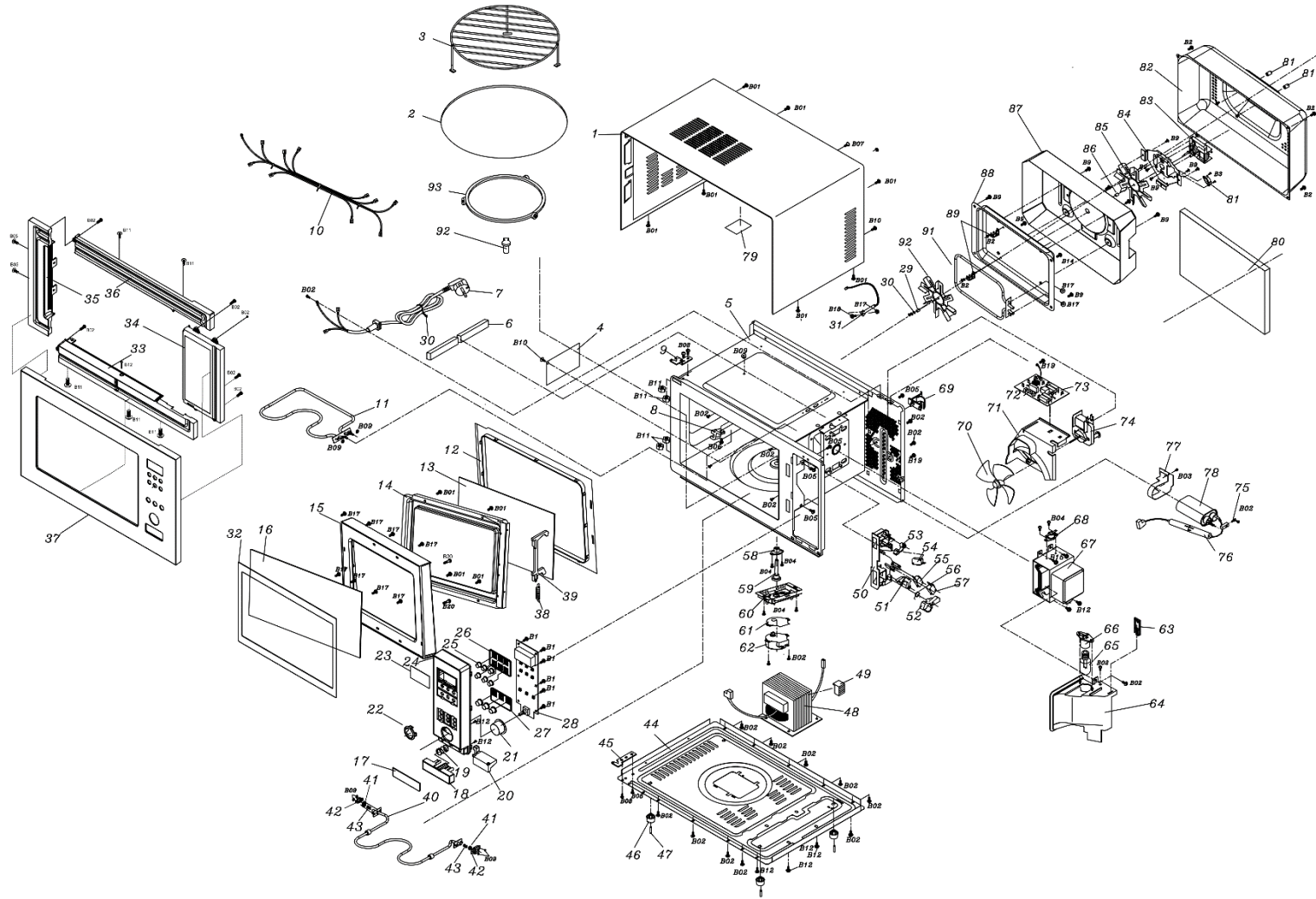


WINE COOLER
MODEL NUMBER
WRMICRO31SS
PARTS MANUAL



Installation Kit part number AA000002314



Parts Manual

Item No.	Apelson No.	Manufacturer No.	Qty.	Description
1	2119901741A0	21199-01741-A0	1	MANTLE
2	2510000004A0	25100-00004-A0	1	GLASS PLATE
3	2159900511A0	21599-00511-A0	1	GRILL RACK
4	2910000001B0	29100-00001-B0	1	SPLASH-PROOF BOARD
5	5010000110A0	50100-00110-A0	1	CAVITY
7	2341010095B0	23410-10095-B0	1	POWER WIRE
8	2940000006G0	29400-00006-G0	1	FIX HOOK
9	2129900559A0	21299-00559-A0	1	UP BEARING
10	2340000264A0	23400-00264-A0	1	ELECTRIC WIRE GROUP
11	2350010081C0	23500-10081-C0	1	ELECTRIC HEATING TUBE (TOP)
12	2220000199C0	22200-00199-C0	1	PROTECTION FRAME
13	2530000200C0	25300-00200-C0	1	CONVECTION GLASS
14	5020000002B0	50200-00002-B0	1	DOOR BODY ASSEMBLING UNIT
15	2210000621F0	22100-00621-F0	1	FACE FRAME
16	2530000917C0	25300-00917-C0	1	WINDOW BOARD
17	2129902248A0	21299-02248-A0	1	OPEN THE DOOR FACEPLATE
18	2210001313C0	22100-01313-C0	1	OPEN THE DOOR KEY-PRESS
19	2159900159A0	21599-00159-A0	1	SPRING
20	2220000172C0	22200-00172-C0	1	REVOLVING ARM
21	2210001176B0	22100-01176-B0	1	RING KNOB
22	2210001314A0	22100-01314-A0	1	RING KNOB COVER
23	2210000784B0	22100-00784-B0	1	FILM
24	2210000694B0	22100-00694-B0	1	CONTROL BOARD
25	2210001315A0	22100-01315-A0	9	BUTTON
26	2220000376A0	22200-00376-A0	1	ROW BUTTON A
26	2220000406A0	22200-00406-A0	1	ROW BUTTON A
28	2332011021A0	23320-11021-A0	1	PCB

30	2159900210B0	21599-00210-B0	1	WASHER
31	2373010115A0	23730-10115-A0	1	TEMPERATURE RESISTOR
33	2220000345A0	22200-00345-A0	1	INNER FRAME BOTTOM
34	2220000375A0	22200-00375-A0	1	INNER FRAME RIGHT
35	2220000378A0	22200-00378-A0	1	INNER FRAME LEFT
36	2220000492B0	22200-00492-B0	1	INNER FRAME TOP
37	21131224B3A0	21131-224B3-A0	1	FRAME
38	2159900139A0	21599-00139-A0	1	DOOR HOOK SPRING
39	2220000170C0	22200-00170-C0	1	DOOR HOOK
44	2119900109	21199-00109-E0	1	BASE BOARD
45	2129900442B0	21299-00442-B0	1	LOWER SUPPORT
46	2210000500B0	22100-00500-B0	4	LEG
47	2220000115A0	22200-00115-A0	4	PIN
48	2324010092A0	23240-10092-A0	1	TRANSFORMER
49	2950000010A0	29500-00010-A0	1	DAMPING BLOCK
50	2220000020F0	22200-00020-F0	1	SWITCH STAND
52	2220000171	22200-00171-E0	1	REVOLVING ARM
54 and 55	2371010001A0	23710-10001-A0	2	MICRO-SWITCH A
57	2371010003A0	23710-10003-A0	1	MICRO-SWITCH C
61 and 62	2364010084A0	23640-10084-A0	1	TRAY MOTOR
64	2129900250G0	21299-00250-G0	1	AIR INLET COVER
65 and 66	2375010131A0	23750-10131-A0	1	LAMP AND LAMP HOLDER
67	2311010002B0	23110-10002-B0	1	MAGNETRON
68	2375010018A0	23750-10018-A0	2	THERMOSTAT
70	2220000142C0	22200-00142-C0	1	FAN VANE
70	2129900398A0	21299-00398-A0	1	FAN VANE
70	2129900307B0	21299-00307-B0	1	FAN VANE
71	2220000419D0	22200-00419-D0	1	FAN SUPPORT
72 and 73	2330010010A0	23300-10010-A0	1	NOISE FILTER
74	236L010002A0	236L0-10002-A0	1	FAN MOTOR

75	2371010058A0	23710-10058-A0	1	DIODE
76	2376010137A0	23760-10137-A0	1	HIGH VOLTAGE FUSE
77	2129900230G0	21299-00230-G0	1	CAPACITANCE CLAMP
78	2371010042A0	23710-10042-A0	1	CAPACITOR
79	2129900273A0	21299-00273-A0	1	HEAT-PROOF BOARD
79	2129900271G0	21299-00271-G0	1	HEAT-PROOF BOARD
82	2119900324H0	21199-00324-H0	1	BACK COVER
83	236L010037A0	236L0-10037-A0	1	CONVECTION MOTOR
84	2129900397	21299-00397-E0	1	MOTOR STAND
86	2159900025B0	21599-00025-B0	1	SLEEVE
86	2159900068B0	21599-00068-B0	1	SLEEVE
86	2159900069B0	21599-00069-B0	1	SLEEVE
88	2119900499F0	21199-00499-F0	1	HOT WIND CAVITY
91	2350010061B0	23500-10061-B0	1	HEATING TUBE
92	2230000012C0	22300-00012-C0	1	CONNECTOR
93	2230000098A0	22300-00098-A0	1	ROLLER SUPPORT